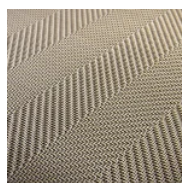


For the realization of sliding panels to close the wardrobes of the suites of the Thompson Hyatt Hotel in Madrid, the Spiga Bronze product was selected. The characteristics that pushed the architects to choose this product are the "rigidity" and density of the special weave, which creates a see-through effect ideal for masking but not hiding. Furthermore, the golden frame used to tension the fabric creates a very elegant contrast, in harmony with the decor of the room.

LOCATION

MADRID

PRODUCT USED



SPIGA BRONZE
Spigate