

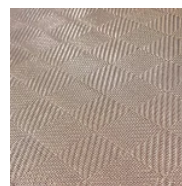


The designers Ciarmoli and Quada have chosen to embellish some elements of the Today and Time collections designed for Annibale Colombo with the integration of the Diamante Bronze metal fabric layered in glass. The result is an imperceptible fusion with the precious woods chosen to create furniture with the charm of a unique piece.

LOCATION

Italy

PRODUCT USED



DIAMANTE BRONZE
Spigate